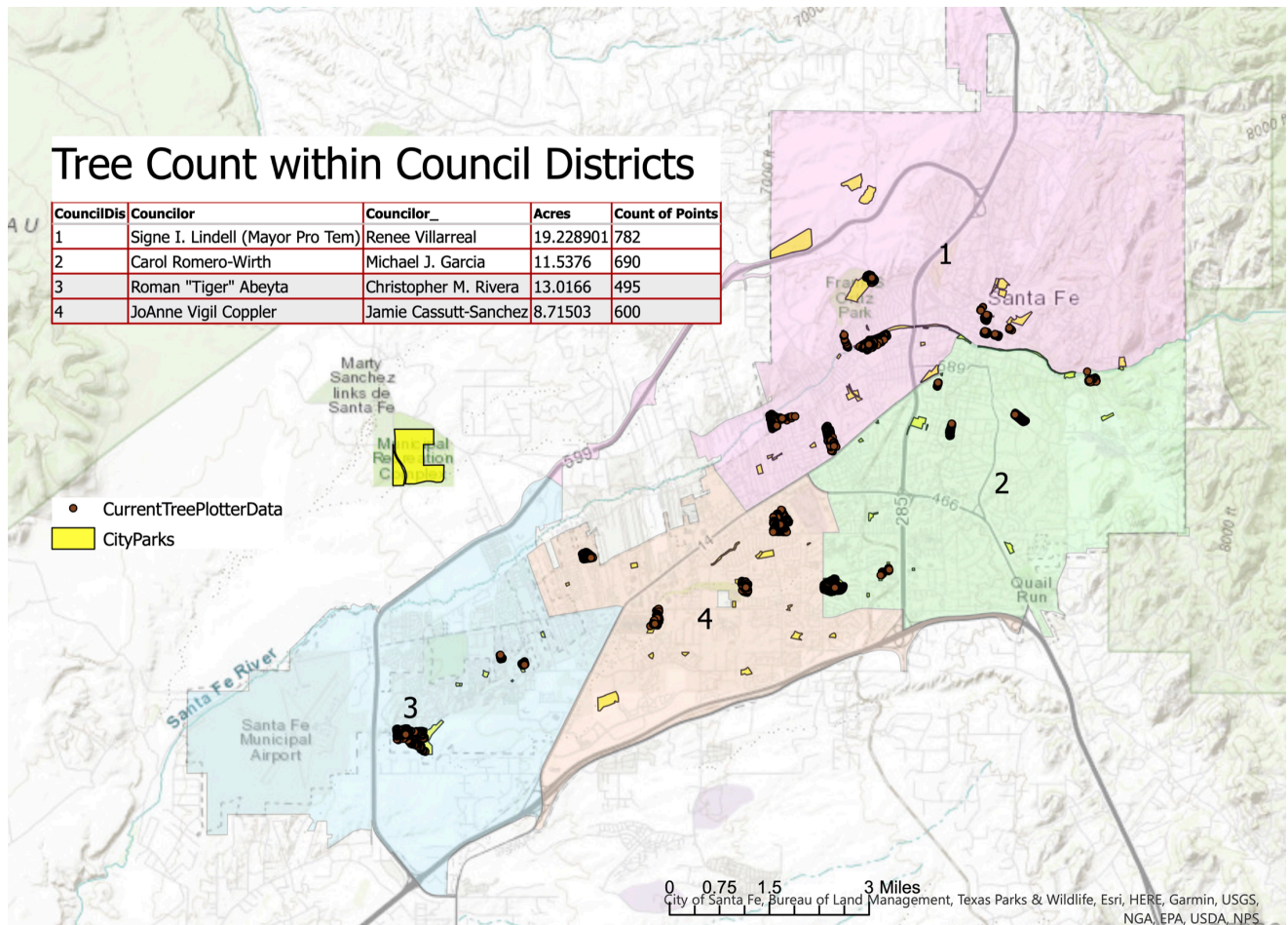


TREE INVENTORY

Update on the Santa Fe Public Spaces Tree Inventory



Map illustrating parks and trees inventoried with chart of distribution by council district (Touchett 2021).

The purpose of the inventory is multi-faceted. It teaches volunteers through citizen engagement how to identify trees and health concerns. It offers timely information to the City Parks Division for maintenance, as well as providing a method for directing care. It allows for analysis of the overall health of Santa Fe’s tree canopy and helps direct future planting projects. The inventory data teaches the value of trees and the ecosystem services they provide. They clean and add humidity to our air, cool and add

longevity to our concrete and asphalt, provide shade and support wildlife. They hold rainwater and prevent erosion and flooding. Knowing which trees do well in Santa Fe through the inventory helps guide a diverse canopy. Analyzing where trees are needed most and where stormwater can support growth creates useful and successful planting projects.

The inventory has confirmed that some trees are not adapting to drought conditions of the past year, and insects have proliferated in these vulnerable species. Mulch and access to water have been the two most significant factors supporting the park trees.

DETAILS TO DATE AND INCREASING WEEKLY:

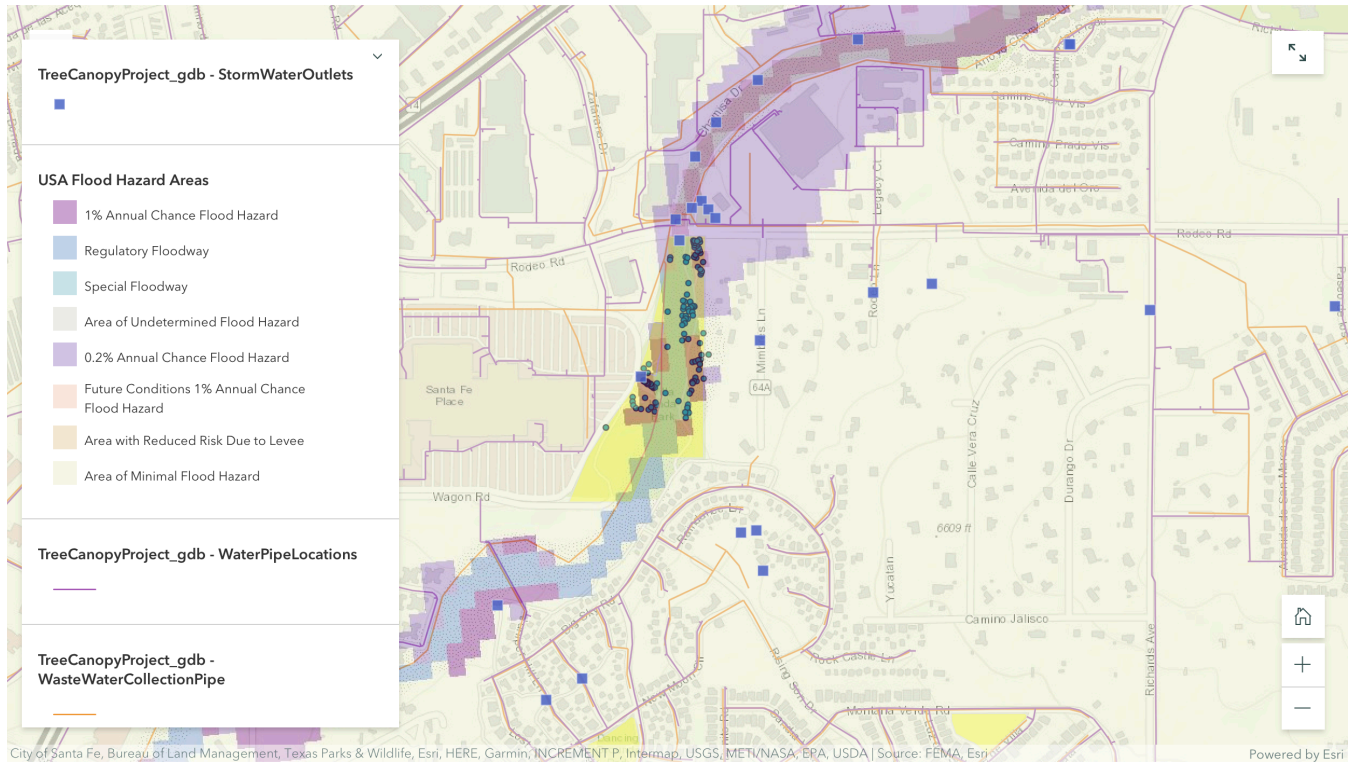
- 2,685 trees inventoried, 819 trees this year, amounting to an increase of tree count by 31% in 2021.
- 36 parks inventoried since 2016, 8 of which were inventoried in 2021
- 29% of City parks inventoried, 3% more this year, which is a 22% increase in 2021
- Total acreage inventoried is 226.44 acres, of which 98.77 acres were completed in 2021
- 26% of park acreage inventoried, 11.3% of which was done in 2021, amounting to a 44% increase from all previous years.

Year	Park
2016	Water History
2016	Cathedral Park
2016	City Hall
2016	Santa Fe Plaza
2017	Bicentennial
2017	Cornell Rose Garden
2017	Franklin Miles
2017	Tommy Macionne
2017	Torreón
2018	Amelia White
2018	Candelario
2018	Frenchy's Park
2018	Ragle
2018	Ragle Pump Tracks
2019	Ashbaugh
2019	Frank Ortiz
2019	Las Acequias
2021	Los Milagros
2021	Monica Lucero
2021	Oscar Fernandez
2021	Rancho del Sol
2021	SWAN
2021	Villa Linda
2021	Villa Linda Dog Park
2021	Herb Martinez Park

“Knowing which trees do well in Santa Fe will direct planting where they are needed most. Diversity of selection creates a stable and resilient canopy, protecting our water and our future livability.”

-ATHENA BESHUR, SEEDS OF WISDOM, LLC

Parks inventoried with geo-referencing data, arranged by date of collection.



Trees in relationship to flood hazard zone at Villa Linda Park, as example of utilizing stormwater to help grow our urban canopy.